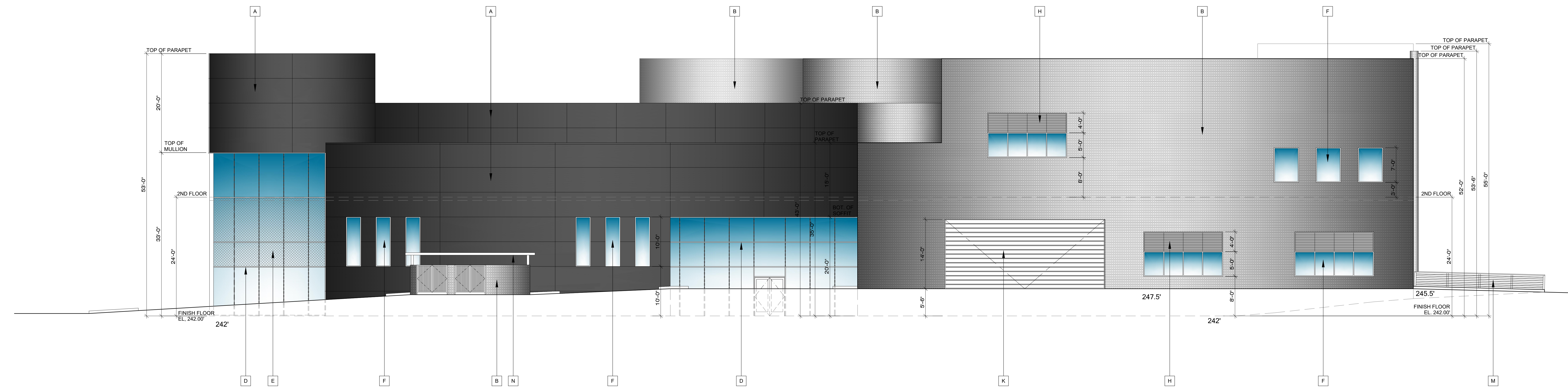


PROPOSED EXTERIOR ELEVATIONS - SOUTH









SCALE: 1/8" = 1'-0"



PROPOSED EXTERIOR ELEVATIONS - EAST

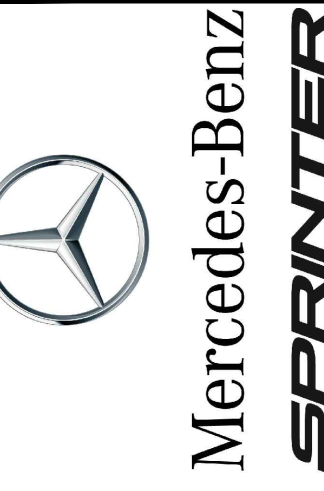
SCALE: 1/8" = 1'-0"

EXTERIOR FINISHES LEGEND

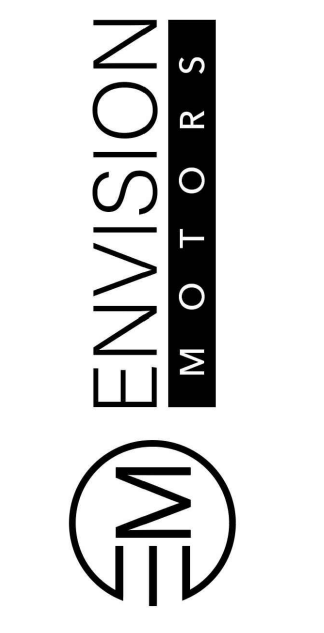
 WE01, ALPOLIC ALUMINUM COMPOSITE METAL PANELS, BLX BLACK 483-BLX-30 COLOR: SOLIDBLACK	 SG01, SPANDREL GLASS PANEL, OLDCASTLE BUILDING ENVELOPE, 1/4" CLEAR AN COLOR: MEDIUM GREY 2
 WE02, MECHANICAL SCREEN, CENTRIA CONCEPT 6 SERIES, CORRUGATED METAL PANEL 20 GA. COATED GALVANIZED STEEL COLOR: #9946 SILVERSMITH	 SG01, SPANDREL GLASS PANEL
 EPT01 PAINT SHERWIN WILLIAMS COLOR: #SW 6255, MORNING FOG	 CW02 CLEAR ANODIZED ALUMINUM STOREFRONT SYSTEM W/ GL01, PPG SOLARBAN 70XL, CLEAR INSULATING GLASS, SHGC: 0.32, U-VALUE 0.26
 GL01 PPG SOLARBAN 70XL, CLEAR INSULATING GLASS, SHGC: 0.32, U-VALUE 0.26	 H STEEL LOUVER, PAINTED EPT01 (GLOSS FINISH)

EXTERIOR ELEVATION KEYNOTES

A WE01, ALPOLIC ALUMINUM COMPOSITE METAL PANELS, BLX BLACK 483-BLX-30 COLOR: SOLIDBLACK	J HIGH SPEED ROLL-UP DOOR (ALBANY RR3000) CLEAR ANODIZED, GLASS: CLEAR.
B WE02, MECHANICAL SCREEN, CENTRIA CONCEPT 6 SERIES, CORRUGATED METAL PANEL 20 GA. COATED GALVANIZED STEEL COLOR: #9946 SILVERSMITH	K STEEL ROLL-UP DOOR, PAINTED EPT01 SHERWIN WILLIAMS, #SW 6255, MORNING FOG
C HOLLOW METAL DOOR & FRAME, PAINTED EPT01 SHERWIN WILLIAMS, #SW 6255, MORNING FOG	L SECTIONAL ROLL-UP DOOR CLEAR ANODIZED, GLASS: CLEAR.
D CW01, CLEAR ANODIZED CURTAIN WALL SYSTEM AND CAPTURED HORIZONTAL MULLIONS W/ CLEAR INSULATED GLAZING SYSTEM, BUTTED JOINTS W/ W/ GL01, PPG SOLARBAN 70XL, CLEAR INSULATING GLASS, SHGC: 0.32, U-VALUE 0.26.	M STAINLESS STEEL CABLE GUARDRAIL
E SG01, SPANDREL GLASS PANEL	N COVERED TRASH ENCLOSURE
F CW02 CLEAR ANODIZED ALUMINUM STOREFRONT SYSTEM W/ GL01, PPG SOLARBAN 70XL, CLEAR INSULATING GLASS, SHGC: 0.32, U-VALUE 0.26	
G SIGNAGE PER MERCEDES BENZ SIGN VENDOR	
H STEEL LOUVER, PAINTED EPT01 (GLOSS FINISH)	



SPRINTER ROSEVILLE



PROJECT NUMBER:

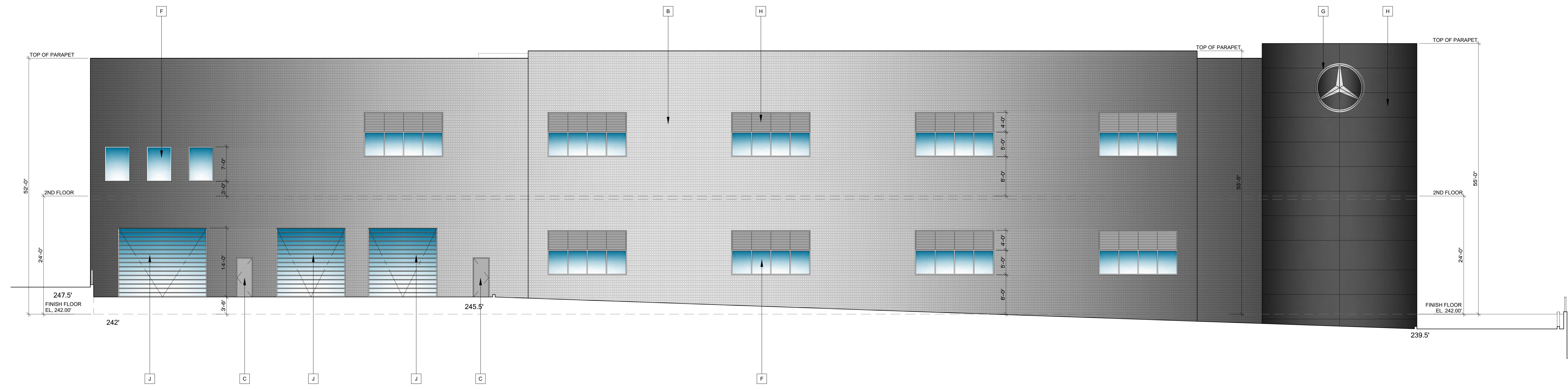
Mercedes-Benz
SPRINTER

1513 EUREKA ROAD
ROSEVILLE, CA 95661

ENVISSION
MOTORS

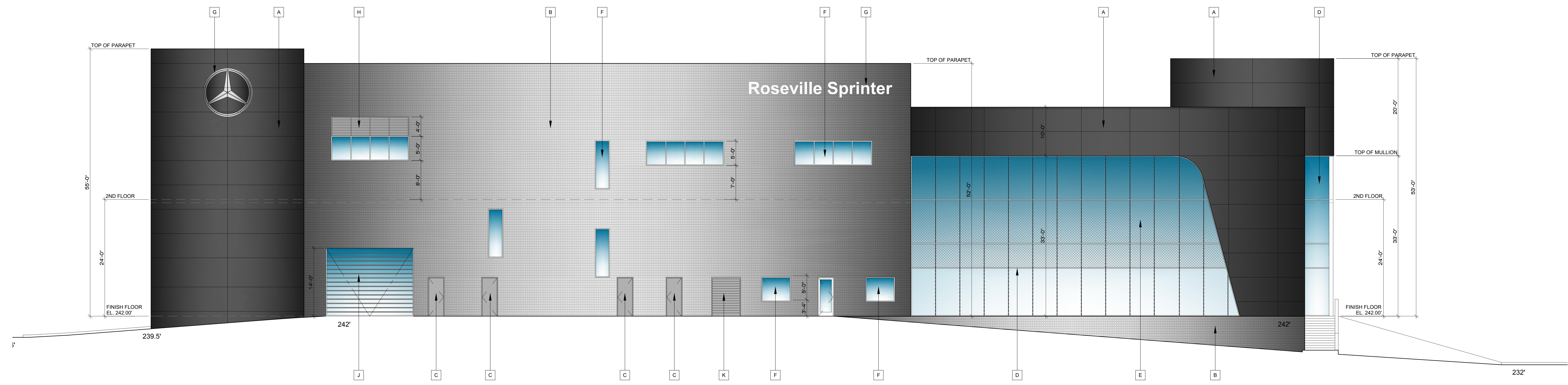
PROJECT NUMBER:

PROPOSED EXTERIOR ELEVATIONS



PROPOSED EXTERIOR ELEVATIONS - NORTH

SCALE: 1/8" = 1'-0"



PROPOSED EXTERIOR ELEVATIONS - WEST

SCALE: 1/8" = 1'-0"

EXTERIOR FINISHES LEGEND

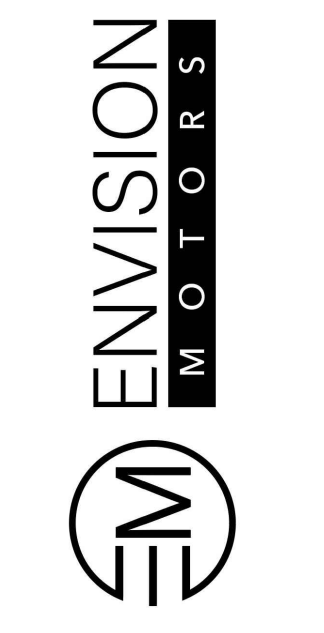
WE01, ALPOLIC ALUMINUM COMPOSITE METAL PANELS, BLK BLACK 483-BLX-30 COLOR: SOLIDBLACK	SG01 SPANDREL GLASS PANEL, OLDCASTLE BUILDING ENVELOPE, 1/4" CLEAR AN COLOR: MEDIUM GREY 2
WE02, MECHANICAL SCREEN, CENTRIA CONCEPT 6 SERIES, CORRUGATED METAL PANEL 20 GA. COATED GALVANIZED STEEL COLOR: #9946 SILVERSMITH	
EPT01 PAINT SHERWIN WILLIAMS COLOR: #SW 6255, MORNING FOG	
GL01 PPG SOLARBAN 70XL, CLEAR INSULATING GLASS, SHGC. 0.32, U-VALUE 0.26.	

EXTERIOR ELEVATION KEYNOTES

A WE01, ALPOLIC ALUMINUM COMPOSITE METAL PANELS, BLK BLACK 483-BLX-30 COLOR: SOLIDBLACK	J HIGH SPEED ROLL-UP DOOR (ALBANY RR3000) CLEAR ANODIZED, GLASS: CLEAR.
B WE02, MECHANICAL SCREEN, CENTRIA CONCEPT 6 SERIES, CORRUGATED METAL PANEL 20 GA. COATED GALVANIZED STEEL COLOR: #9946 SILVERSMITH	K STEEL ROLL-UP DOOR, PAINTED EPT01 SHERWIN WILLIAMS, #SW 6255, MORNING FOG
C HOLLOW METAL DOOR & FRAME, PAINTED EPT01 SHERWIN WILLIAMS, #SW 6255, MORNING FOG	L SECTIONAL ROLL-UP DOOR CLEAR ANODIZED, GLASS: CLEAR.
D CW01, CLEAR ANODIZED CURTAIN WALL SYSTEM AND CAPTURED HORIZONTAL MULLIONS W/ CLEAR INSULATED GLAZING SYSTEM. BUTTED JOINTS W/ W/ GL01, PPG SOLARBAN 70XL, CLEAR INSULATING GLASS, SHGC. 0.32, U-VALUE 0.26.	M STAINLESS STEEL CABLE GUARDRAIL
E SG01, SPANDREL GLASS PANEL	N COVERED TRASH ENCLOSURE
F CW02 CLEAR ANODIZED ALUMINUM STOREFRONT SYSTEM W/ GL01, PPG SOLARBAN 70XL, CLEAR INSULATING GLASS, SHGC. 0.32, U-VALUE 0.26.	
G SIGNAGE PER MERCEDES BENZ SIGN VENDOR	
H STEEL LOUVER, PAINTED EPT01 (GLOSS FINISH)	

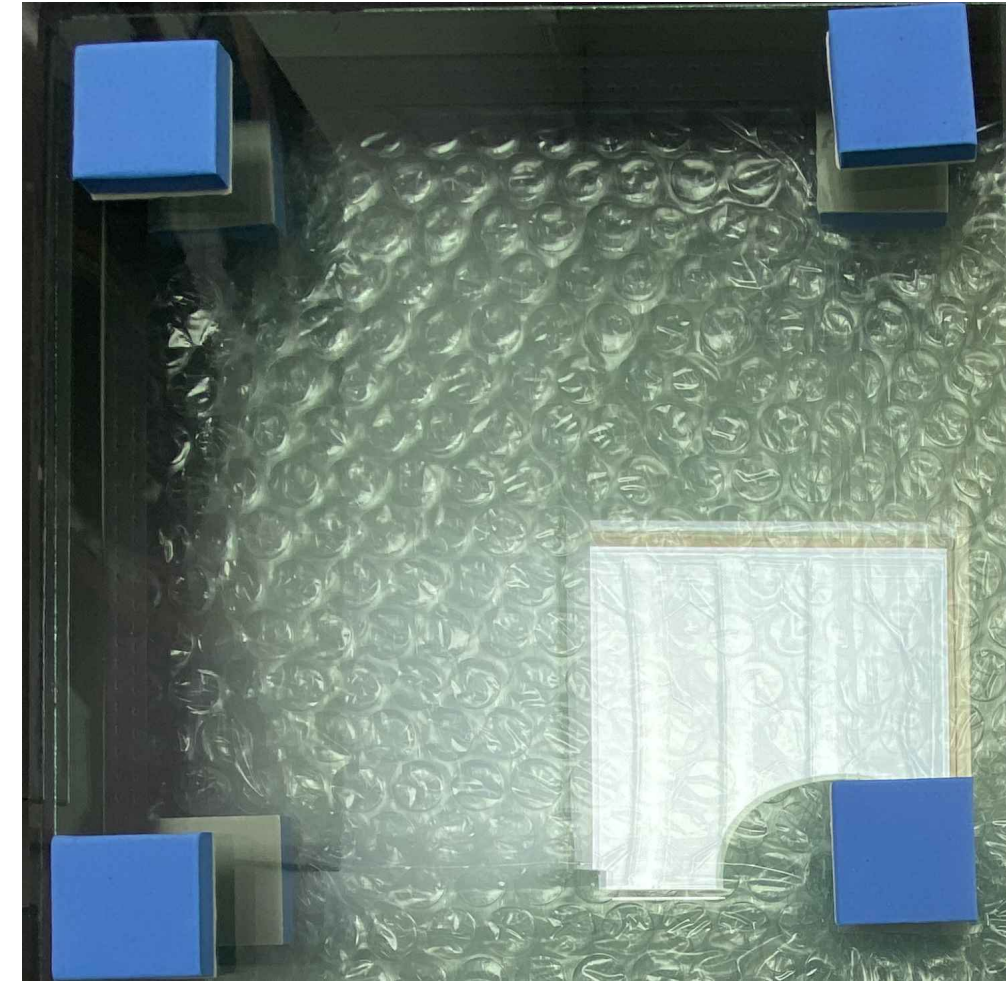


SPRINTER ROSEVILLE
1513 EUREKA ROAD
ROSEVILLE, CA 95661

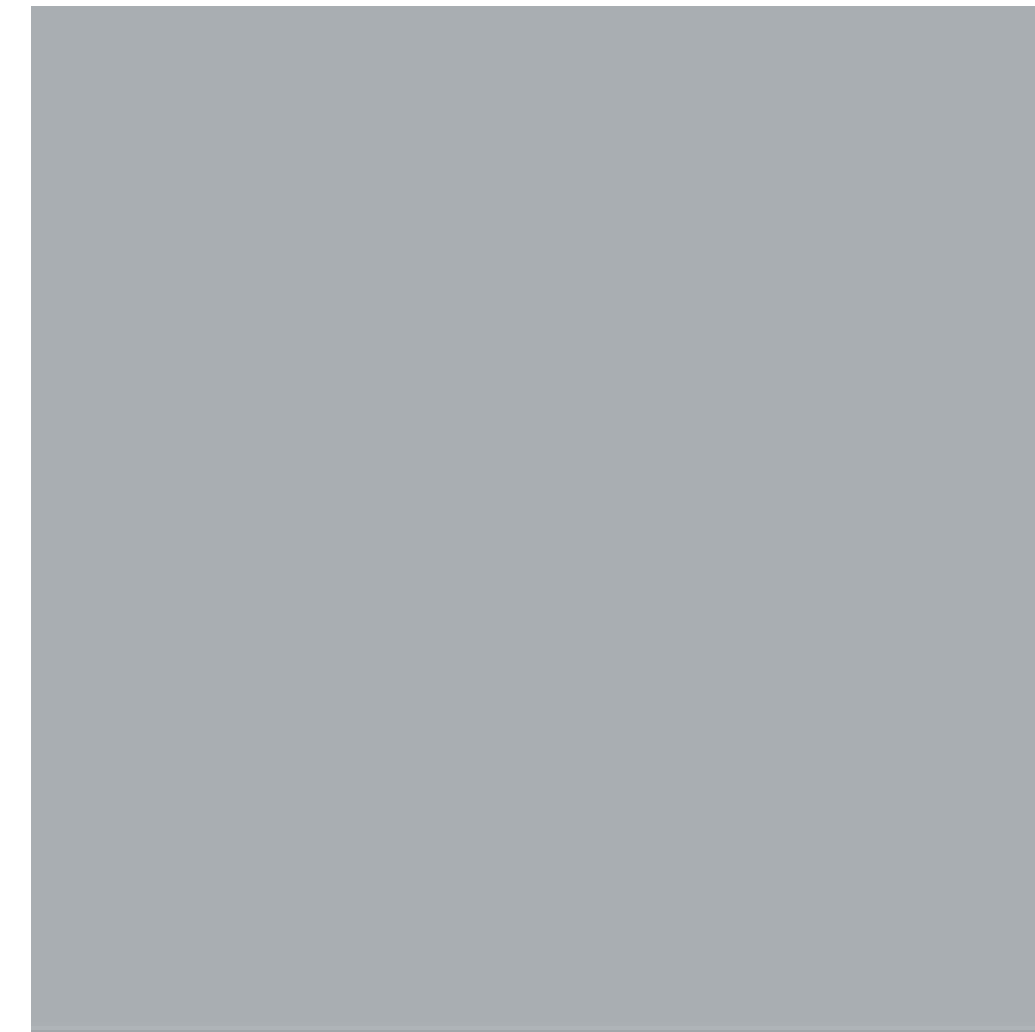


PROJECT NUMBER:

PROPOSED EXTERIOR ELEVATIONS



GL01



EPT01



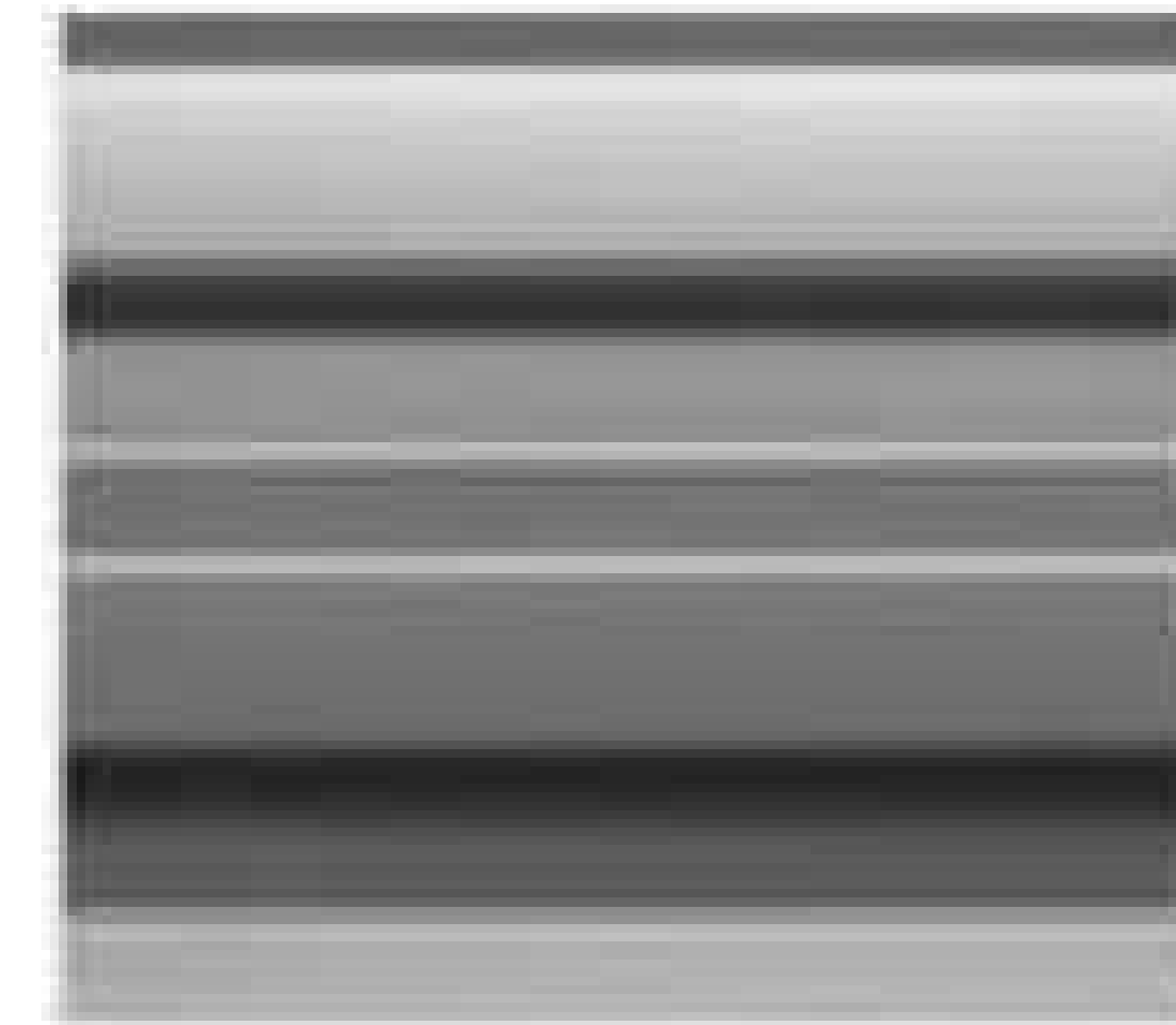
WE01



SG01



CW01 & CW02



WE02



SPRINTER
ROSEVILLE
1513 EUREKA ROAD
ROSEVILLE, CA 95661



FINISH SCHEDULE

PROJECT NUMBER:

EXTERIOR MATERIALS SCHEDULE

EXTERIOR FINISHES	CODE	MATERIAL	MANUFACTURER / SUPPLIER	DESCRIPTION		LOCATION	ADDITIONAL INFORMATION
				PRODUCT / SERIES	COLOR		
	WE01	ALUMINUM COMPOSITE METAL PANEL	ALPOLIC		BLX BLACK 483-BLX-30 SOLID BLACK	PER PLAN	EXTERIOR FACADE
	WE02	CORRUGATED METAL PANEL	CENTRIA	CONCEPT 6 SERIES	20 GA COATED GALV STEEL #9946 SILVERSMITH	PER PLAN	SERVICE BUILDING FACADE. STEEL TUBE FRAME TO BE PAINTED TO MATCH #9946 SILVERSMITH
	EPT01	EXTERIOR PAINT	SHERWIN WILLIAMS		SW 6255 MORNING FOG		SERVICE BUILDING FACADE.
	CW01	CURTAIN WALL	ARCADIA	CURTAIN WALL T500 OPG3000 (THERMAL)	FRAME: CLEAR ANODIZED	2 1/4" x 10" FOR 1" GLASS	EXTERIOR GLAZING, GREATER THAN 16'-0" HIGH
	CW02	CURTAIN WALL	ARCADIA	CURTAIN WALL T500 OPG6000 (THERMAL)	FRAME: CLEAR ANODIZED	2 1/4" x 6" FOR 1" GLASS	EXTERIOR GLAZING, LESS THAN 16'-0" HIGH
	GL01	GLAZING	OLDCASTLE BUILDING ENVELOPE	PPG SOLARBAN 70XL SHGC: 0.32, U-VALUE 0.26.	CLEAR INSULATING GLASS	1/2"	EXTERIOR GLAZING
	SG01	GLAZING	OLDCASTLE BUILDING ENVELOPE	SPANDREL GLASS PANEL	MEDIUM GREY 2	1/4" CLEAR AN	EXTERIOR GLAZING



FROM ROCKY RIDGE ROAD



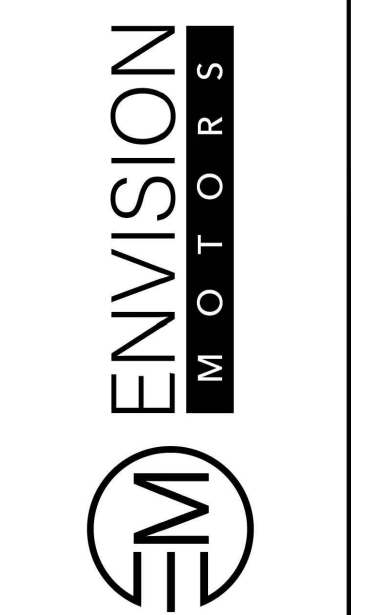
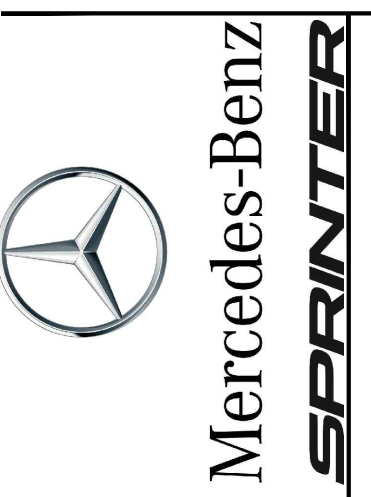
FROM EUREKA ROAD



FROM ROCKY RIDGE ROAD



FROM EUREKA ROAD



PROJECT NUMBER:

RENDERINGS